

CANOPY LAYOUT
SCALE: NONE

FOR BID ONLY

GENERAL NOTES

STRUCTURAL STEEL SHALL MEET THE AISC 2005 SPECIFICATION 13TH EDITION AND THE AISC CODE OF STANDARD PRACTICE, 2005
COLUMNS TO BE ASTM A500, GRADE B

BOLTS TO BE ASTM A325 OR ASTM F1852 (A325-TC)

INSTALLATION OF BOLTS MUST CONSIST OF ONE OF THE FOLLOWING:

1. TURN OF THE NUT METHOD:

A.) BOLTS SHALL BE BROUGHT TO A SNUG TIGHT CONDITION-DEFINED AS THE CONDITION THAT EXISTS WHEN ALL OF THE PLIES IN A CONNECTION HAVE BEEN PULLED INTO FIRM CONTACT BY THE BOLTS IN THE JOINT AND ALL OF THE BOLTS IN THE JOINT HAVE BEEN TIGHTENED SUFFICIENTLY TO PREVENT THE REMOVAL OF THE NUTS WITHOUT THE USE OF A WRENCH.

B.) MARK NUT AND WASHER THEN TURN NUT AS FOLLOWS:

UP TO 3 IN. LENGTH = 1/3 TURN
UP TO 6 IN. LENGTH = 1/2 TURN

2. LOAD INDICATING WASHER:

A.) SEE DETAIL COMPRESSION WASHER SPECIFICATION

3. TWIST-OFF BOLTS:

A.) ALL BOLTS SHALL HAVE A HARDENED WASHER UNDER THE NUT

B.) ALL BOLTS IN THE ASSEMBLY SHALL BE BROUGHT TO THE SNUG TIGHT CONDITION PRIOR TO TWISTING OFF SPLINE(S).

C.) ALL BOLTS IN THE JOINT SHALL BE PRETENSIONED WITH THE TWIST-OFF-TYPE TENSION-CONTROL BOLT INSTALLATION WRENCH SEVERING THE SPLINE

WIDE FLANGE BEAMS TO BE ASTM A992

ANGLES, & PLATES TO BE ASTM A36

REINFORCING STEEL TO BE ASTM 615, GRADE 60

DECK PANELS TO BE ASTM 653, GRADE C MINIMUM

WELDING SHALL MEET THE REQUIREMENTS OF THE AWS FOR

BUILDING CONSTRUCTION USING E70XX ELECTRODES

ALL STRUCTURAL STEEL TO BE PAINTED WITH ONE SHOP COAT PRIMER

CANOPY FABRICATOR TO BE AISC CERTIFIED

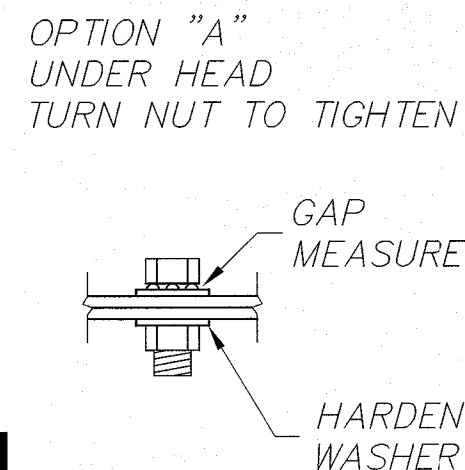
ERECTOR'S NOTES

1. CAULK ALL GUTTER JOINTS DURING INSTALLATION AND APPLY SOUDASEAL FC TO TOP SIDE OF ALL GUTTER JOINTS AFTER INSTALLATION
2. CAULK ALL JOINTS BETWEEN GUTTERS AND DECK AND BETWEEN COLUMNS AND DECK WITH A SMOOTH, CLEAN APPLICATION
3. APPLY SOUDASEAL FC CAULK AROUND THE COLUMNS ON THE TOP SIDE AFTER ALCOHOL PREP OF THE COLUMNS & BOTTOM SIDE HAS BEEN CAULKED.
4. DECK PANELS AND TRIM WILL BE WIPED CLEAN AFTER INSTALLATION
5. ALL TRASH AND EXTRA MATERIALS WILL BE HAULED OFF JOBSITE
6. CHECK WITH GENERAL CONTRACTOR FOR DRAIN ORIENTATION
7. FURNISH & INSTALL (2) 1" ELECT. CONDUITS IN (4) COLUMNS.
8. INSTALL (24) CUSTOMER FURNISHED LIGHTS
9. POST PAINT ACM SW 7683 - BUFF
10. FURNISH AND INSTALL 3" POST PAINT STRIPE, SW6115 TOTALLY TAN
11. FURNISH AND INSTALL (2) CIRCLE K COMET RED DECAL "AIMERS" ON NORTH, SOUTH & WESTERN ELEVATIONS

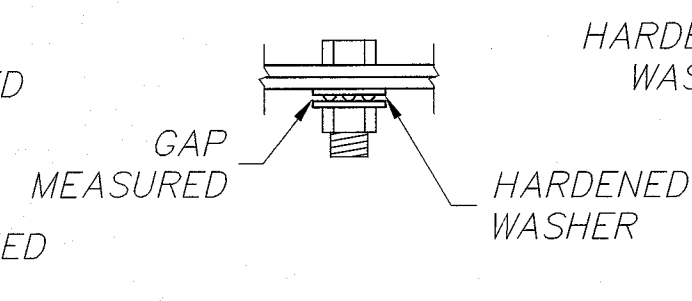
*DECK LIGHTS TO BE ON SITE AT TIME OF CANOPY INSTALLATION

**EXCLUDES: STONE CLADDING FOR COLUMN SHROUDS, CANOPY DECK LIGHT FIXTURES, ELECT. CONNECTION OF DECK LIGHTS & ANY ITEMS NOT LISTED ABOVE.

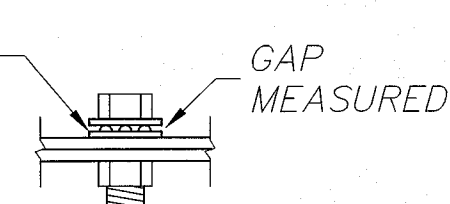
SEALANT SCHEDULE	
SEALANT	APPLICATION
TYTAN SILICONE CAULK WHITE	GUTTER TO DECK & BOTH SIDES OF LEADER GUTTER
SOUDASEAL FC	GUTTER JOINTS, TOP COLUMN
SOUDASEAL FC	GUTTER CLEAT
SOUDASEAL FC	ALUMINUM DROPOUT
SOUDASEAL FC	PVC TO COLUMN (T&B)
SOUDASEAL FC	LARGE GAPS



OPTION "B"
UNDER TURNED
ELEMENT
TURN NUT TO TIGHTEN



OPTION "C"
UNDER TURNED
ELEMENT
TURN HEAD TO TIGHTEN



INSTALLATION NOTES: (FOR WASHERS WITH PLAIN FINISH)

1. FLAT FACE OF COMPRESSIBLE WASHER MUST BE PLACED AGAINST ASSEMBLED PARTS.

2. AFTER BOLTS ARE FULLY TIGHTENED, GAP MUST BE NO MORE THAN .015" FOR OPTION "A" & .005" FOR OPTIONS "B" AND "C".

COMPRESSION WASHER SPECIFICATION

DESIGN LOADS:

DEAD LOAD = 3 p.s.f.(DECK + LIGHTS) +
WEIGHT OF STRUCTURAL COMPONENTS

LIVE LOAD = 20 p.s.f.

SNOW LOAD = 20 p.s.f.

WIND LOAD = 90 m.p.h. EXP. C

BLDG CODE = 2009 NEW MEXICO COMMERCIAL BUILDING CODE

EQUIVALENT LATERAL FORCE PROCEDURE

LATERAL FORCE RESISTING SYSTEM = CANTILEVERED

COLUMN SYSTEM-ORDINARY STEEL MOMENT FRAME

SITE CLASS = D

Ss (0.2) = 0.57

S1 (1.0) = 0.17

SDS = 0.512

SD1 = 0.241

Fa = 1.34

Fv = 2.12

R = 1.25

IMPORTANCE FACTOR = 1.0

OCCUPANCY CATEGORY = II

SEISMIC DESIGN CATEGORY = D

CS = 0.410

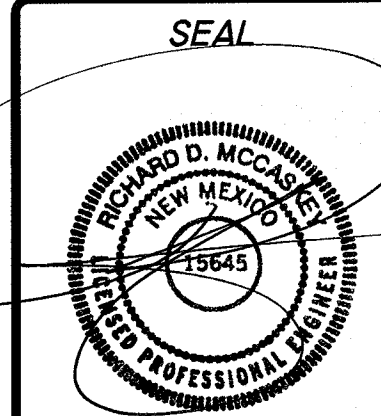
CONSTRUCTION TYPE = IIB

OCCUPANCY CATEGORY = M

TOTAL SEISMIC BASE SHEAR BOTH DIRECTIONS = 15.24 KIPS

LANE
SUPPLY, INC.
120 FAIRVIEW
ARLINGTON, TX. 76010
(817) 261-9116

NOTES: THIS DOCUMENT IS THE PROPERTY OF LANE COMPANY. IT IS TO BE USED ONLY FOR THE PROJECT AND LOCATION SPECIFICALLY IDENTIFIED HEREON. ANY REUSE, REPRODUCTION, OR MODIFICATION OF THIS DOCUMENT WITHOUT THE WRITTEN CONSENT OF LANE COMPANY IS PROHIBITED. LANE COMPANY SHALL NOT BE RESPONSIBLE FOR ANY ERRORS OR OMISSIONS IN THIS DOCUMENT.



FEB 12 2015

NO.	DATE	REVISIONS	DRAWN	CHK'D
1	2/13/2015	PERMIT SET	CP	

LSC: 53703
DRAWN BY: CP
CHECKED BY:
DATE: 2/4/2015

CIRCLE K STORES INC.
CIRCLE K
S.E.C. COORS BLVD. S.W. & GUN CLUB RD. S.W.
ALBUQUERQUE, NM
42'-10" X 118'-2" CANOPY

CA-3